

COMPASS

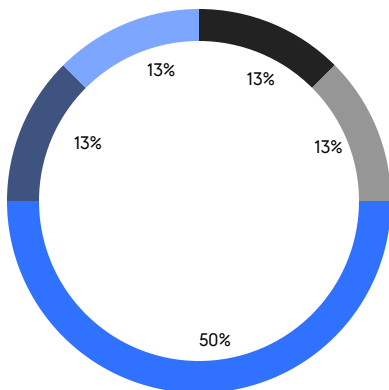
QUEENS WEEKLY LUXURY REPORT



1818 CORNELIA STREET

RESIDENTIAL CONTRACTS
\$1.25 MILLION AND UP

- SOUTHEASTERN QUEENS
- THE ROCKAWAYS
- NORTHEASTERN QUEENS
- NORTHWESTERN QUEENS
- CENTRAL QUEENS



8

CONTRACTS SIGNED
THIS WEEK

\$19,481,888

TOTAL CONTRACT VOLUME

The Queens luxury real estate market, defined as all properties priced \$1.25M and above, saw 8 contracts signed this week, made up of 1 condo, and 7 houses. The previous week saw 11 deals. For more information or data, please reach out to a Compass agent.

\$2,435,236

AVERAGE ASKING PRICE

\$2,062,500

MEDIAN ASKING PRICE

\$847

AVERAGE PPSF

2%

AVERAGE DISCOUNT

\$19,481,888

TOTAL VOLUME

83

AVERAGE DAYS ON MARKET

86-31 Sancho Street in Holliswood Jamaica entered contract this week, with a last asking price of \$5,500,000. This single-family house spans 5,935 square feet with 6 beds and 5 full baths. It features a paver driveway, a tiled backyard patio with sport court, hardwood and stone floors, pendant-style lighting, a gym and recreation area, and much more.

Also signed this week was 555 Oak Drive in Far Rockaway, with a last asking price of \$3,100,000. Built in 2001, this modern single-family house offers 6 beds and 4 full baths. It features a tiered entryway and landscaped front yard, hardwood floors, a large dining room, a library/office, a basement recreation area/gym with laundry, a landscaped back yard with trees and patio, and much more.

1

CONDO DEAL(S)

0

CO-OP DEAL(S)

7

TOWNHOUSE DEAL(S)

\$2,250,000

AVERAGE ASKING PRICE

\$0

AVERAGE ASKING PRICE

\$2,461,699

AVERAGE ASKING PRICE

\$2,250,000

MEDIAN ASKING PRICE

\$0

MEDIAN ASKING PRICE

\$1,875,000

MEDIAN ASKING PRICE

\$1,800

AVERAGE PPSF

\$688

AVERAGE PPSF

1,250

AVERAGE SQFT

3,464

AVERAGE SQFT



86-31 SANCHO ST

Holliswood Jamaica

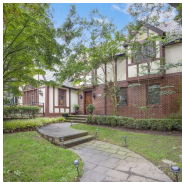
TYPE	TOWNHOUSE	STATUS	CONTRACT	ASK	\$5,500,000	INITIAL	\$5,500,000
SQFT	5,935	PPSF	\$927	BEDS	6	BATHS	5.5
FEES	\$1,793	DOM	126				



555 OAK DR

Far Rockaway

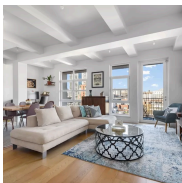
TYPE	TOWNHOUSE	STATUS	CONTRACT	ASK	\$3,100,000	INITIAL	\$3,400,000
SQFT	N/A	PPSF	N/A	BEDS	6	BATHS	4.5
FEES	\$993	DOM	158				



242-16 RUSHMORE AVE

Douglaston

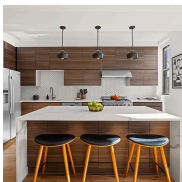
TYPE	TOWNHOUSE	STATUS	CONTRACT	ASK	\$2,600,000	INITIAL	\$2,750,000
SQFT	5,500	PPSF	\$473	BEDS	5	BATHS	3.5
FEES	\$1,167	DOM	199				



5-33 48TH AVE #PH2/7P

Long Island City

TYPE	CONDO	STATUS	CONTRACT	ASK	\$2,250,000	INITIAL	\$2,250,000
SQFT	1,250	PPSF	\$1,800	BEDS	3	BATHS	3
FEES	\$2,456	DOM	27				



59-12 MADISON ST

Ridgewood

TYPE	TOWNHOUSE	STATUS	CONTRACT	ASK	\$1,875,000	INITIAL	\$1,875,000
SQFT	3,240	PPSF	\$579	BEDS	5	BATHS	4
FEES	\$682	DOM	16				



149-12 19TH AVE

Whitestone

TYPE	TOWNHOUSE	STATUS	CONTRACT	ASK	\$1,499,000	INITIAL	\$1,499,000
SQFT	1,621	PPSF	\$925	BEDS	4	BATHS	2
FEES	\$706	DOM	48				

Compass is a licensed real estate broker and abides by Equal Housing Opportunity laws. All material presented herein is intended for informational purposes only. Information is compiled from sources deemed reliable but is subject to errors, omissions, changes in price, condition, sale, or withdrawal without notice. No statement is made as to the accuracy of any description. All measurements and square footages are approximate. This is not intended to solicit property already listed. Nothing herein shall be construed as legal, accounting or other professional advice outside the realm of real estate brokerage.



209-35 30TH AVE

Bayside

TYPE	TOWNHOUSE	STATUS	CONTRACT	ASK	\$1,399,888	INITIAL	\$1,499,888
SQFT	2,688	PPSF	\$521	BEDS	4	BATHS	3
FEES	\$846	DOM	80				



85-21 215TH ST

Oakland Gardens

TYPE	TOWNHOUSE	STATUS	CONTRACT	ASK	\$1,258,000	INITIAL	\$1,258,000
SQFT	1,800	PPSF	\$699	BEDS	4	BATHS	2
FEES	\$966	DOM	4				

Compass is a licensed real estate broker and abides by Equal Housing Opportunity laws. All material presented herein is intended for informational purposes only. Information is compiled from sources deemed reliable but is subject to errors, omissions, changes in price, condition, sale, or withdrawal without notice. No statement is made as to the accuracy of any description. All measurements and square footages are approximate. This is not intended to solicit property already listed. Nothing herein shall be construed as legal, accounting or other professional advice outside the realm of real estate brokerage.